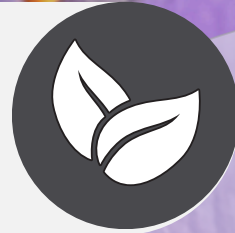


Violet Leaf Abs.

Ingredients with personality and responsibility

Lluch Essence

Grows as ground-cover plants



Viola odorata L.

Manual: Leaves



Egypt /
France

Ethanol extraction from
leaves



All year round

0.02–0.05%



March – April

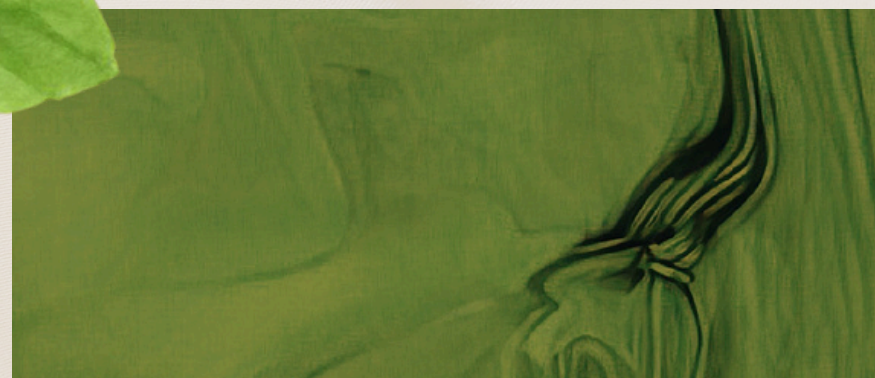
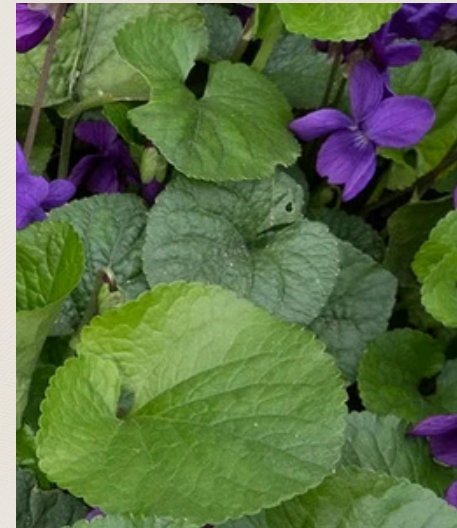


Violet leafs ABS.



Lluch Essence

Green, leafy,
metallic,
ozonic
nuances



Composition:

- Ionones (α -, β -ionone)
- 2,6-Nonadienal
- Cis-3-hexenol
- Farnesol
- Nerolidol
- Fatty acids (linolenic acid, palmitic acid, linoleic acid, ethyl linoleate)

- **IFRA restricted**
- **Cosmetic allergens contained**
- **REACH EU compliant**
- **Food grade**