

Digital Sustainability Report

RS 26000 Summary



Lluch Essence

2024

SUSTAINABLE
DEVELOPMENT
GOALS

RightSupply

SUSTAINABILITY INDEX



This is our **Communication on Progress** in implementing the principles of the **United Nations Global Compact** and supporting broader UN goals.

We welcome feedback on its contents.



INFORME RS 26000: 2024

LLUCH ESSENCE belongs to the network of suppliers Rightsupply and uses its platform for the analysis and digital reporting of sustainability, corporate responsibility and good governance.

This document is a summary-presentation of the full digital report, being available to the public and accessible through the QR-link code included on the front and back cover. The sufficiency and adequacy of contents are verified by the ECOMUNDIS technical validation team, taking as a reference the ISO 26000 standard, Agenda 2030 and the United Nations Global Compact, as well as other internationally recognized references.

This is our Communication on Progress in implementing the principles of the United Nations Global Compact.



Lluch Essence



We
are a
RightSupply
Company

INDEX OF CONTENTS

01 OUR COMMITMENT

02 THE ORGANIZATION

03 STAKEHOLDERS AND MATERIALITY

04 ACTING ON CLIMATE CHANGE

05 CARING ABOUT PEOPLE

06 RS 26000 SUSTAINABILITY INDEXES

07 AGENDA 2030 AND SUSTAINABLE DEVELOPMENT

08 STRATEGY 2050



Commitment

At Lluch Essence we understand sustainability as a firm commitment to balance the needs of the present with respect for future generations. For us, sustainability means ensuring social well-being, protecting the environment, acting with ethical governance and promoting responsible economic growth.

In 2024, we have taken an important step towards our long-term goals with the launch of the Sustainability Strategy 2030. This roadmap sets out the principles, commitments and objectives that will guide us in the coming years, based on a clear materiality model and focused on the priorities of both our company and our stakeholders.

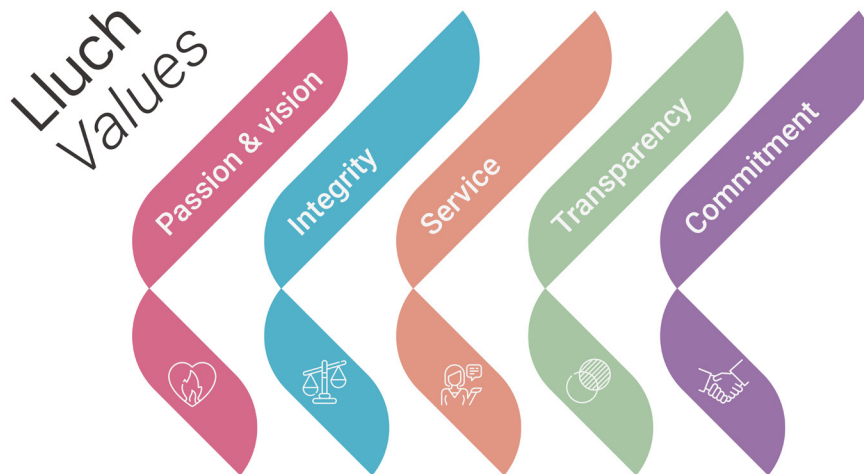


LLUCH ESSENCE'S VALUES

Lluch Essence is a family-owned company with a tradition of more than 75 years supplying aromas and fragrances to the perfumery, cosmetics, animal feed and food industries. Lluch Essence has an absolute commitment to people, the environment and quality of service. We work with the firm conviction of growing together in a sustainable environment full of opportunities.

Our pillars are our values and it is thanks to them that we are the company we are today.

- **PASSION AND VISION**
Our passion and vision lead us to constantly seek opportunities for development and growth, which generate great long-term value.
- **INTEGRITY**
Our ideas, actions and values always go hand in hand. Integrity defines the way we work.
- **SERVICE EXCELLENCE**
Offering the best service means taking care of the smallest detail. We strive for excellence in our products and solutions and, above all, in the relationships we build.
- **TRANSPARENCY**
Transparency and cooperation are an intrinsic part of our DNA. Being open strengthens us and makes us not only more skillful, but also wiser.
- **COMMITMENT**
Our commitment to our employees, to society and to the planet is and will always be the basis of all our actions.





REPORT ORGANIZATION AND SCOPE



As a company dedicated to aromas and fragrances, Lluch Essence guarantees the traceability and transparency of all its products, in order to guarantee responsible consumption within the sector.

Main products distributed

- ORANGE SWEET BRAZIL OIL
- CIS-3 HEXENOL
- CITRAL
- PHENYL ETHYL ALCOHOL
- PATCHOULI OIL

4,000
products

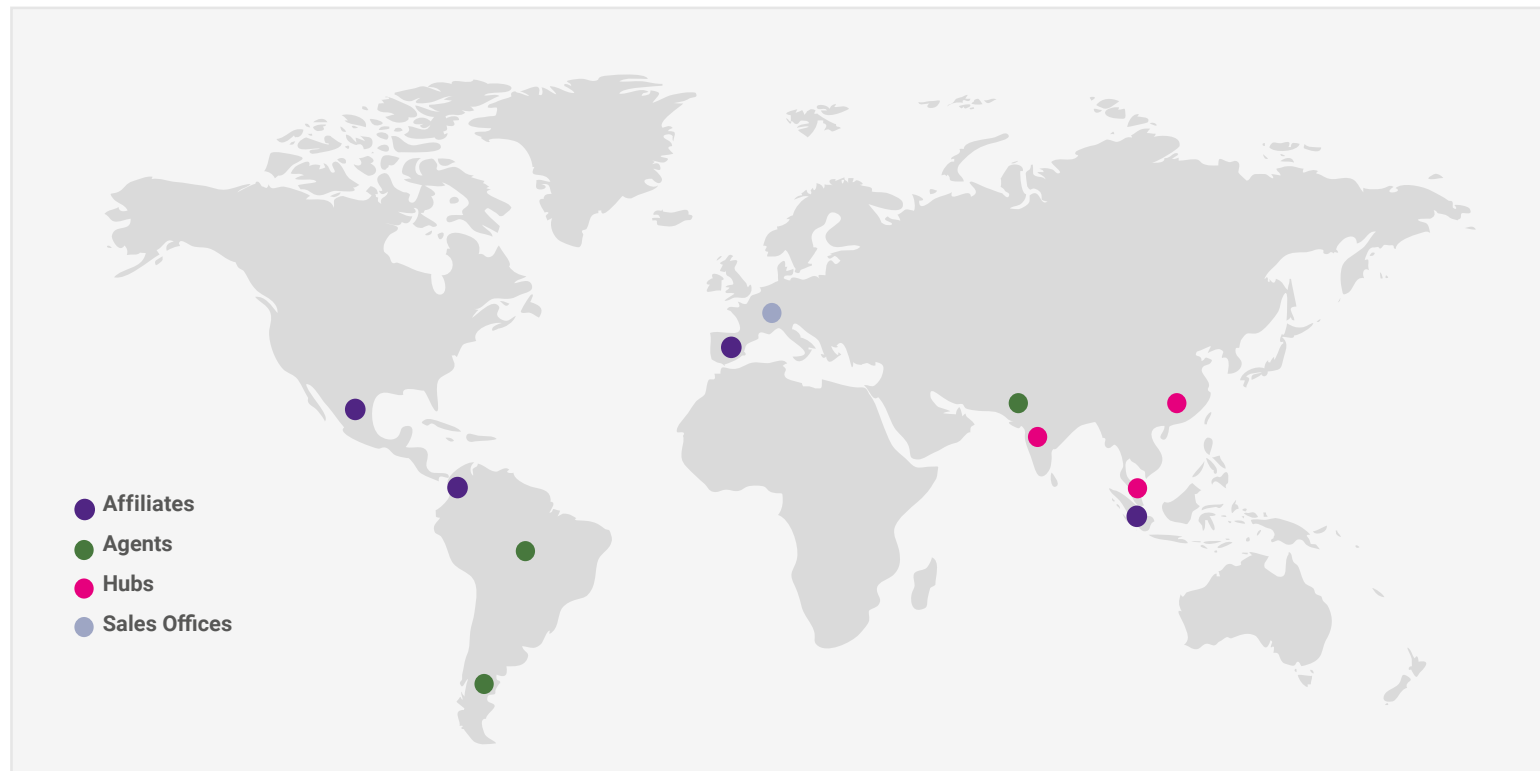
+60
Countries
global presence

+850
customers

Contract
Manufacturing
Business Unit

Affiliates in
Colombia, Mexico
and Singapore

Geographic location of the main commercial operations and location of our production centres.





STAKEHOLDERS & MATERIALITY

Material aspects

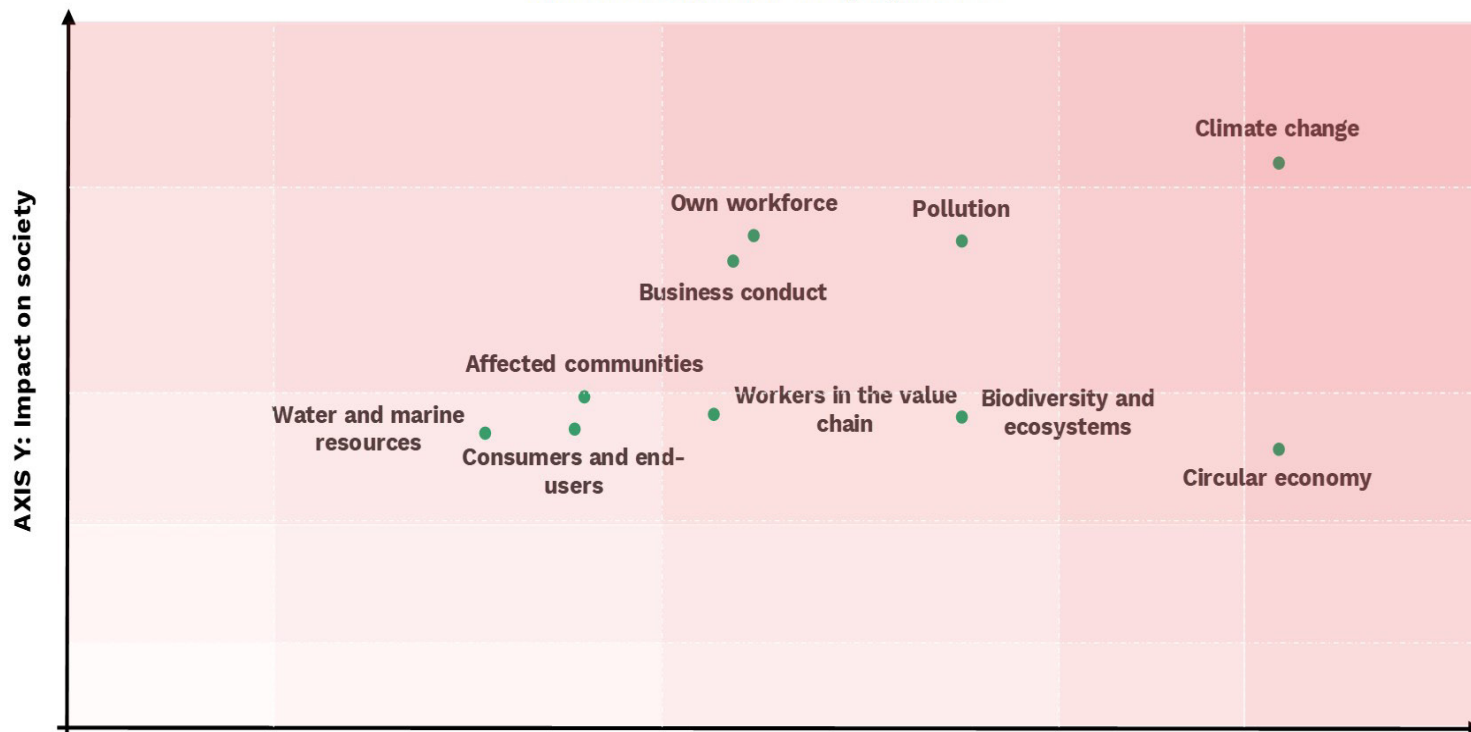


At Lluch Essence we understand that sustainability cannot be managed without a clear understanding of what issues are truly relevant to our activity and to those who are affected by it. That is why, in line with the most recent European regulations, we apply the principle of Dual Materiality, as established in Article 29b of Directive 2013/34/EU, as amended by the Corporate Sustainability Reporting Directive (CSRD).

This dual approach allows us to analyze sustainability aspects from two complementary perspectives:

- Financial materiality, which examines how environmental, social and governance (ESG) factors may affect Lluch Essence's economic and financial performance.
- Impact materiality, which evaluates the effects of our activities on the environment and society, beyond their financial impact.

Matrix of dual materiality by theme





ACTING ON CLIMATE CHANGE

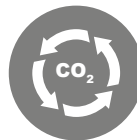


At Lluch Essence, sustainability is understood as an integral commitment that balances social welfare, environmental protection, good governance and economic growth. Each action is oriented to endure in time without compromising the future, generating responsible and conscious value. Lluch Essence is committed to generate value with its actions, understanding that its responsibility as an economic agent is to contribute to a healthier community, generating a positive impact on people, communities and the environment.



100%

Renewable Energy
ISO 50001



100%

Scope 1 and 2 offset



87%

Local suppliers of
indirect materials



80%

Suppliers who have signed
our ethical charter



81%

Waste Valorization



40%

Natural & Organic
Reference



40 ha

Preserved
Forest

CARING ABOUT PEOPLE

Lluch Essence's commitment is "Thriving Together", which is why we work in a culture of sustainable development that promotes the growth of those who trust in the company, including customers, suppliers and workers. Lluch Essence is committed to generating value with its actions, understanding that its responsibility as an economic agent is to contribute to a healthier community, generating a positive impact on people and supporting communities.



174

Workers



99%

Permanent Contract



98.25%

Compliance with the current Equality Plan



4.69 h

Training per employees



3.2

Incident frequency index

PARTNERSHIP





OUR COMMITMENT TO CORPORATE SOCIAL RESPONSIBILITY

Initiatives

Local cooperation. SAO Prat



In the heart of El Prat de Llobregat, the collaboration between Lluç Essence and the SaóPrat association is blossoming into a synergy of support and social transformation.

6th Solidarity Race - Rotary el Prat



For the second consecutive year, Lluç Essence participated in the 6th solidarity race organized by the Rotary Club of El Prat, with the aim of raising funds for childhood cancer research at the Hospital Sant Joan de Déu.

A special Sant Jordi



As every year in Sant Jordi, roses have been distributed to the entire team of Lluç Essence with the collaboration of the Fundació Roure. On the other hand, a special workshop was held with the collaboration of Eurofirms Foundation.

Gala SuperArte



In 2024, part of the management team had the opportunity to live an extraordinary experience at the SuperArte Gala organized by Fundación SIFU, a unique show where more than 60 artists of different ages and abilities shared the stage, demonstrating that art knows no barriers.

AfforHealth



Lluch Essence recognizes that the well-being of its team is key to the success of its operations. For this reason, in 2024 it began collaborating with AfforHealth, a psychology firm specializing in psychosocial risk management, to implement an innovative Employee Assistance Program (PAE).

Team building for team cohesion



In May 2024, the entire Lluch Essence team participated in a team building activity focused on team cohesion. The activity consisted of building mechanisms to create a circuit and achieve the “butterfly effect”, reinforcing collaboration and communication between team members.

INDEX & CERTIFICATIONS

It is essential to have indexes and partners that certify in an external and impartial way the responsible and ethical management of the business activity, as well as to ensure the transparency and reliability of the good practices and data shown. That is why Lluçh Essence has the following indexes and certifications:



SOCIAL RESPONSIBILITY

RS26000 report

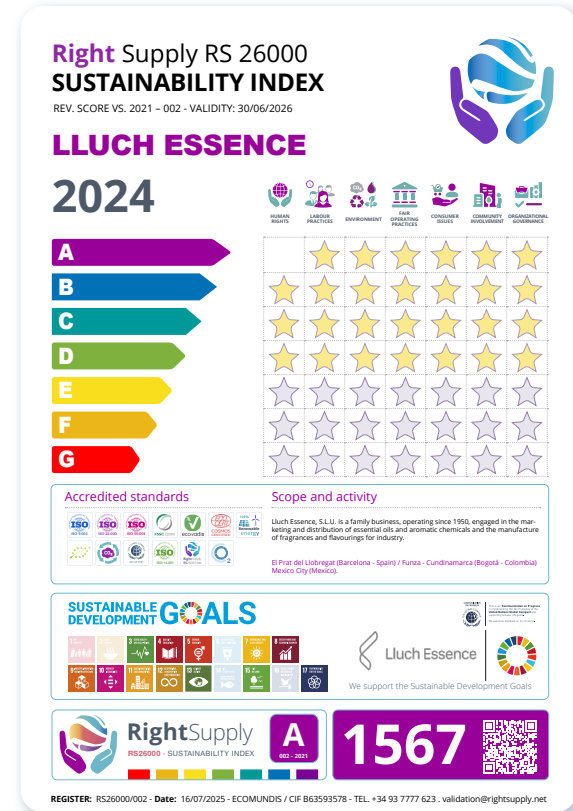
Results of the assessment

Since 2019, LLUCH ESSENCE has been assessing its impact in terms of corporate social responsibility and good corporate governance based on the core subjects of the ISO 26000 standard.

In 2024, as a result of the analysis of more than 250 metrics and specific indicators, Lluch Essence obtained a total of 1,567 points having a grade of A on the RightSupply platform.

The analysis takes into account the provision of verified management systems, products, activities or practices, the degree of implementation of the Sustainable Development Goals of the 2030 Agenda and the evolution of various environmental sustainability indexes.

The RS26000 Sustainability Report and Index are available to all interested parties.





SUSTAINABILITY INDEX

RightSupply RS26000

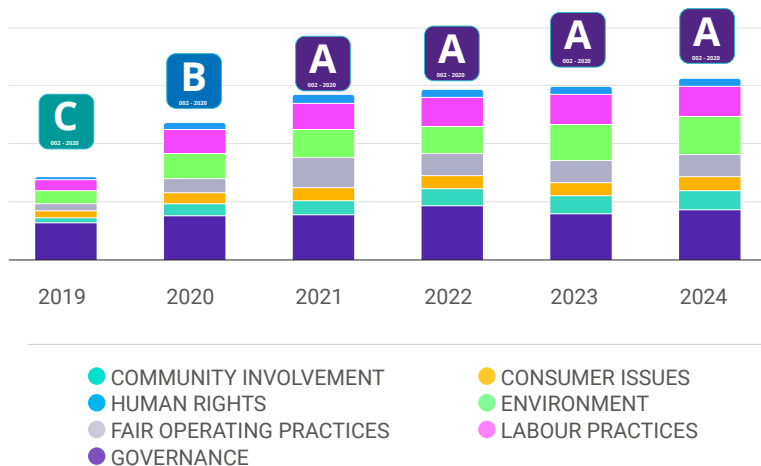
Continuous improvement

LLUCH ESSENCE assesses its impact in terms of social responsibility and good corporate governance on the basis of the fundamental issues set out in the ISO 26000 standard. As a result, the RightSupply platform generates quantitative values associated with the analysis of more than 200 metrics or indicators. Said result takes into account the degree of implementation of the Sustainable Development Goals of the 2030 Agenda and the evolution of several environmental sustainability indexes.

In 2023, we were categorized as A, with a score of 1,471 points. For the 2024 Sustainability Report, we have successfully exceeded the 1,500-point threshold, once again achieving an A rating.

ISO 26000 CORE SUBJECTS

Disclosed data in RS 26000 reports





Other outstanding awards and certifications





Agenda 2030

The 2030 Agenda for Sustainable Development, adopted by all UN Member States in 2015, offers a shared roadmap for peace and prosperity for the people and the planet, now and in the future. It is a global agenda, based on five dimensions: People, Planet, Prosperity, Peace and Collective Participation, articulated in 17 Sustainable Development Goals (SDGs), further divided into 169 targets to be met by 2030, which are an urgent call to action for all developed and developing countries.

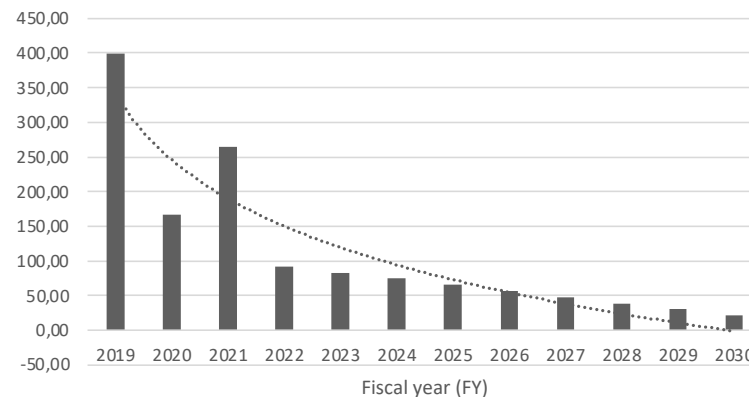
For years, scientists have been warning us that the environmental problems resulting from human activity represent a danger to both human health and the planet. The global health crisis highlighted the vulnerability to these threats and their great impact, so it is imperative that we do not lose focus on the great challenge: the fight against climate change.

Driving the change for carbon neutrality

Lluch Essence is aware that the carbon footprint is not only a calculation tool, but also the first step on the path towards improvement and part of its commitment to reducing greenhouse gas (GHG) emissions. That is why full transparency is offered in the calculation of GHG emissions and in the corporate strategy against climate change.

Lluch Essence presents in the following report the organization's greenhouse gas (GHG) emissions, from the base year (2019) to the current period (2024), for Scopes 1, 2, and 3 (5 categories). Likewise, the objectives and projects aimed at reducing the carbon footprint are presented. Once the quantification has been carried out and being fully aware of the importance of the carbon footprint, we voluntarily offset Scopes 1 and 2. Carbon offsetting systems allow us to invest in environmental and social projects around the world to balance our carbon footprint. Most of these projects are located in developing countries and are designed to reduce future emissions.

Operational Carbon Emissions (tCO₂e)



In 2019, Lluch Essence established an ambitious Net Zero strategy with the goal of achieving carbon neutrality by 2050. This strategy is complemented by medium-term targets for Scopes 1 and 2, aiming to reduce emissions by 57% by 2030.

SUSTAINABLE DEVELOPMENT GOALS IN ACTION

3 GOOD HEALTH AND WELL-BEING



GOOD HEALTH AND WELL-BEING

At Lluçh Essence, we promote a safe, healthy, and collaborative work environment through internal health initiatives, preventive training, and benefits such as accessible medical insurance. We are committed to collective bargaining through committees that support employee well-being, and we ensure our activities do not negatively impact human health by applying a strict supplier assessment system aligned with our values and human rights policies.

4 QUALITY EDUCATION



QUALITY EDUCATION

At Lluçh Essence, we support SDG 4 by promoting continuous learning, sustainability, and the development of future generations. Through internal policies and the Escola Lluçh program, we provide training in gender equality, human rights, and environmental protection, while offering real professional development opportunities to young students.



5 GENDER EQUALITY



GENDER EQUALITY

At Lluch Essence, we are strongly committed to SDG 5, integrating gender equality as a strategic value that strengthens our team and enhances our competitiveness. We have an Equality Plan that outlines specific objectives, indicators, and measures, which are regularly reviewed and adapted to new regulations and the real needs of our team.

Our Equality Committee, composed of members from different departments, acts as a monitoring and oversight body. It analyzes data, evaluates actions, and promotes continuous improvement in gender-related matters. This ensures that equality is not only a legal obligation but an active part of our company culture.

In addition, all employees receive annual training on equal opportunities, with a focus on raising awareness, preventing unconscious bias, and fostering a diverse, fair, and inclusive work environment. We also promote work-life balance and shared responsibility between women and men, helping reduce structural gender gaps and contributing to a respectful and empowering workplace aligned with the principles of the 2030 Agenda.

7 AFFORDABLE AND CLEAN ENERGY



AFFORDABLE AND CLEAN ENERGY

At Lluch Essence, we are strongly committed to SDG 7, promoting universal access to affordable, safe, sustainable, and modern energy. Since 2023, 100% of the electricity we consume comes from certified renewable sources. We also operate our own photovoltaic installation, which generates about 12% of our energy needs, reducing our carbon footprint and dependence on external sources.

In 2024, we made further progress in responsible energy management by obtaining ISO 50001 certification, complementing our ISO 14001 environmental management system. We conduct regular energy audits and implement technological improvements in lighting, HVAC, and processes to optimize consumption and increase energy efficiency across all operations. Furthermore, we actively participate in local energy communities like Energías del Prat, promoting shared use of clean, local energy with positive social impact. Our decarbonization plan sets clear goals to reduce emissions and advance towards increasingly sustainable and self-sufficient energy production, aligned with the global energy transition.

8 DECENT WORK AND ECONOMIC GROWTH



DECENT WORK AND ECONOMIC GROWTH

At Lluch Essence, we promote sustainable and inclusive growth based on creating decent jobs and continuously improving working conditions. We provide regulated contracts, implement work-life balance policies, and foster an organizational culture centered on respect, diversity, and equal opportunities for all employees. We have a Human Rights Policy aligned with the UN Guiding Principles, which directs our internal and external actions. To strengthen employee well-being and active participation, we encourage social dialogue through internal committees that analyze and develop initiatives related to labor and human rights. Furthermore, we apply rigorous due diligence processes across our supply chain, including audits, questionnaires, and an ethical code for suppliers to ensure labor rights are respected. Our commitment is to a growth model that combines innovation, operational efficiency, and the creation of stable, quality employment with a positive social impact.

9 INDUSTRY, INNOVATION AND INFRASTRUCTURE



INDUSTRY, INNOVATION AND INFRASTRUCTURE

At Lluch Essence, we believe in a responsible, resilient, and low-emission industry. We are undergoing an industrial transformation focused on automation, digitalization, and operational optimization as part of adapting to the challenges of the Fourth Industrial Revolution. Additionally, we drive circular economy projects that integrate technological innovation and sustainability, reducing waste and promoting efficient resource use, reinforcing our commitment to a modern, efficient, and environmentally friendly infrastructure.

10 REDUCED INEQUALITIES



REDUCED INEQUALITIES

At Lluch Essence, we take a strong commitment to SDG 10 by fostering a culture rooted in respect for human rights and workplace equality. We actively work to eliminate labor inequalities through an Equality Plan that outlines our intentions and actions. Additionally, we collaborate with associations and foundations that share our sustainability values, enhancing our social impact and helping reduce inequalities in our community.



11 SUSTAINABLE CITIES AND COMMUNITIES



SUSTAINABLE CITIES AND COMMUNITIES

At Lluçh Essence, we promote sustainable infrastructure and responsible processes that enhance urban well-being and reduce environmental impact. We encourage sustainable mobility among our team by incentivizing public transport, cycling, and walking, supported by flexible schedules and remote work.

Our facilities include a photovoltaic plant covering 12% of our electricity needs, with the remaining 100% sourced from certified renewable energy since 2023, reinforcing our commitment to healthier, more resilient, and sustainable urban environments.

12 RESPONSIBLE CONSUMPTION AND PRODUCTION



RESPONSIBLE CONSUMPTION AND PRODUCTION

At Lluçh Essence, we recognize the environmental impact of our activities and actively work to ensure traceability and transparency of our products, promoting responsible consumption. We incorporate circular economy practices to reduce, reuse, and recycle waste. In 2024, we obtained RSPO certification to encourage sustainable practices in palm oil sourcing, ensuring an ethical and sustainable supply chain.

Additionally, we assess our suppliers to guarantee responsible sourcing that respects human rights, labor standards, and environmental protection. To achieve this, we updated our supplier approval questionnaires, audit checklists, and ethical code, successfully approving over 60% of suppliers under ESG criteria, reinforcing our commitment to comprehensive sustainable development.

13 CLIMATE ACTION



CLIMATE ACTION

At Lluch Essence, we actively work to reduce our CO₂ emissions and move toward a more sustainable business model, in line with SDG 13. Key actions implemented in 2024 include:

- Development of a corporate decarbonization plan to guide our climate-related efforts.
- Measurement of emissions since 2019 (Scopes 1 and 2) and 2024 update including new indirect emission categories (Scope 3) based on the GHG Protocol.
- Joint project with Green Touch to recycle olfactory strips and reduce their environmental impact.
- Supplier evaluation based on sustainable criteria, promoting responsible practices across the value chain.
- Collaboration with the Sèlvans association to preserve a century-old forest of over 10 hectares by financing logging rights.
- Definition of our 2030 sustainability strategy through ACCIÓ's NON I program, setting clear commitments and goals aligned with our business vision.



15 LIFE
ON LAND



LIFE ON LAND

As a distributor of raw materials derived from natural resources, Lluçh Essence is firmly committed to integrating environmental, social, and governance (ESG) criteria across all activities, with special attention to ecosystem impact. We have implemented a biodiversity policy that guides decision-making and ensures our values are aligned with global standards. Our product approval system guarantees compliance with international agreements such as the Nagoya Protocol, CITES, the Convention on Biological Diversity (CBD), and RSPO certification—ensuring biodiversity protection throughout our value chain.

In 2024, we strengthened this commitment through environmental volunteering, including waste cleanups in protected areas like the Llobregat Delta. We also updated our supplier evaluation and responsible sourcing policy, prioritizing ecological sustainability and product traceability. Our natural product line is subject to strict due diligence to ensure sustainable forest management and reduce environmental impact.

17 PARTNERSHIPS
FOR THE GOALS



PARTNERSHIPS FOR THE GOALS

At Lluçh Essence, we recognize that achieving SDG 17 requires active cooperation between public and private sectors. That's why we foster strategic partnerships that drive sustainable development collectively.

Our sustainability strategy is built on three core pillars: Environment, Social, and Good Governance, all aligned with the Sustainable Development Goals. In 2024, we developed several national and international cooperation projects in collaboration with foundations and associations, reinforcing our Corporate Social Responsibility.

We actively engage in international certifications and frameworks such as ISO 14001, EcoVadis, RightSupply, GRI, and ISO 26000. We also work closely with NGOs and public bodies like Sèlvans and the Consortium for the Protection of Natural Areas of the Llobregat Delta, strengthening our collaborative approach and positive environmental impact.



2020 - 2030 CHALLENGES

ACTIONS FOR A NEW DECADE



Strategic lines

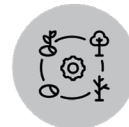
At Lluç Essence we are committed to creating value with our actions. We understand that it is our responsibility to contribute to a more sustainable community, creating a positive impact on people and the environment. To this end, we will work to be more ambitious in meeting our goals, which are aligned with the 2030 Agenda for Sustainable Development, investing in an action plan in favor of people, the planet and prosperity.

Similarly, we take the environmental impact of our actions very seriously.

That is why our commitment to reducing greenhouse gas emissions is in line with the targets set out in the Paris Agreement, setting out a Net Zero strategy for 2050, complemented by a medium-term strategy to achieve a 57% reduction in emissions for Scope 1 and 2 by 2030.



100%
Suppliers evaluated



100%
LCA Lluch products



EC
Energy for workers



SBTi
Validated targets



100%
Electric vehicles



50%
Self-generation energy



ISO 50.001
Certification



Energy
Efficiency Measures

We
are a
RightSupply
Company



Lluch Essence



We support the Sustainable Development Goals



**SUSTAINABLE
DEVELOPMENT
GOALS**

Lluch Essence S.L.U

C/ Lo Gàiter, 160 08820
Prat de Llobregat Barcelona (SPAIN)
Tel: +34 933 793 849
<http://www.lluche.com/>

web@lluche.com

2024