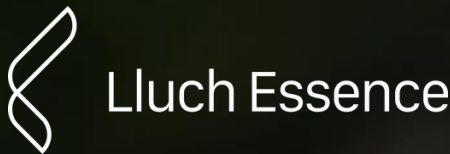


White Pepper CO2 Extract

Ingredients with personality and responsibility



CULTIVATED



PIPER NIGRUM L.



MANUAL



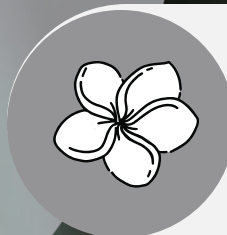
SRI LANKA



SFE CO2 EXTRACTION FROM
DRIED BERRIES



APRIL-JUNE



3 %



MAY- JUNE
DECEMBER - JANUARY



White Pepper CO2 Extract



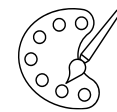
SPICY, ANIMAL



SPICY, WHITE PEPPER CHARACTERISTIC



LIQUID



LIGHT YELLOW TO CREAM



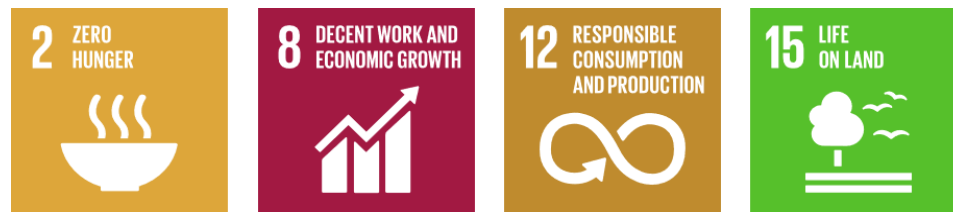
SNACKS, DRINKS, SAUCES. IS USED TO ADD A
SUBTLE SPICINESS WITH NOTES OF PEPPER
AND CHEESE.

IDENTIFICATION:

CAS 8006-82-4
CAS-EU 84929-41-9
EINECS 284-524-7
FEMA 2852
CoE 347

MAIN COMPONENTS:

BUTYRIC, VALERIC AND CAPROIC ACIDS,
ALPHA-PINENE, SABINENE, BETA-
PINENE, DELTA-3-CARENE, D-
LIMONENE, BETA-CARYOPHYLLENE



50 PPM TO 100 PPM

White Pepper CO2 Extract

