

# Scotch Bonnet Chili Green Extract

Ingredients with personality and responsibility



CULTIVATED



CAPSICUM CHINENSE JACQ

MANUAL



SRI LANKA

SOLVENT EXTRACTION



ALL YEAR

1,5 %



FEBRUARY - MAY





# Scoth Bonnet Chili Green Extract



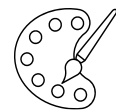
TERPENIC, WARM, SPICY



SPICY, PUNGENT



LIQUID



GREEN TO LIGHT BROWN



SNACKS, DRINKS, SAUCES.  
IS USED TO ADD SPICINESS  
WITH A UNIQUE FRESH AND  
AROMATIC GREEN TOUCH.

## IDENTIFICATION:

CAS 97659-63-7  
CAS-EU 97659-63-7  
EINECS 307-469-3  
FEMA 3404

## MAIN COMPONENTS:

CAPSAICINA (1-20%)  
CARRIER: MONO- AND DI-GLYCERIDES OF  
FATTY ACIDS (E471) AND REFINED  
SUNFLOWER OIL



50 PPM TO 100 PPM