

Clementine Spain

Ingredients with personality and responsibility

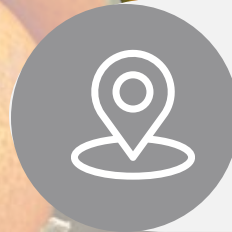


CULTIVATED



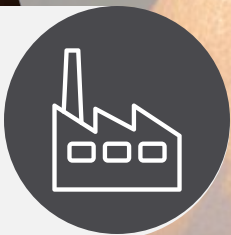
Citrus clementina Hort.

MANUAL



SPAIN

COLD PRESS EXTRACTION



ALL YEAR

0.2 - 0.3 %



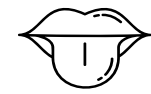
OCTOBER - APRIL



Clementine Spain



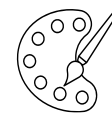
CITRUS, SWEET



CITRUS, SWEET



LIQUID



ORANGE



**BAKERY, BEVERAGES
DESSERTS, SAUCES AND
DRESSINGS**

IDENTIFICATION:

CAS 8008-31-9
CAS-EU 84929-38-4
EINECS 297-672-2
FEMA 2657

MAIN COMPONENTS:

MIRCENE, D-LIMONENE, GAMMA
TERPINENE, DECANAL



Clementine Spain

